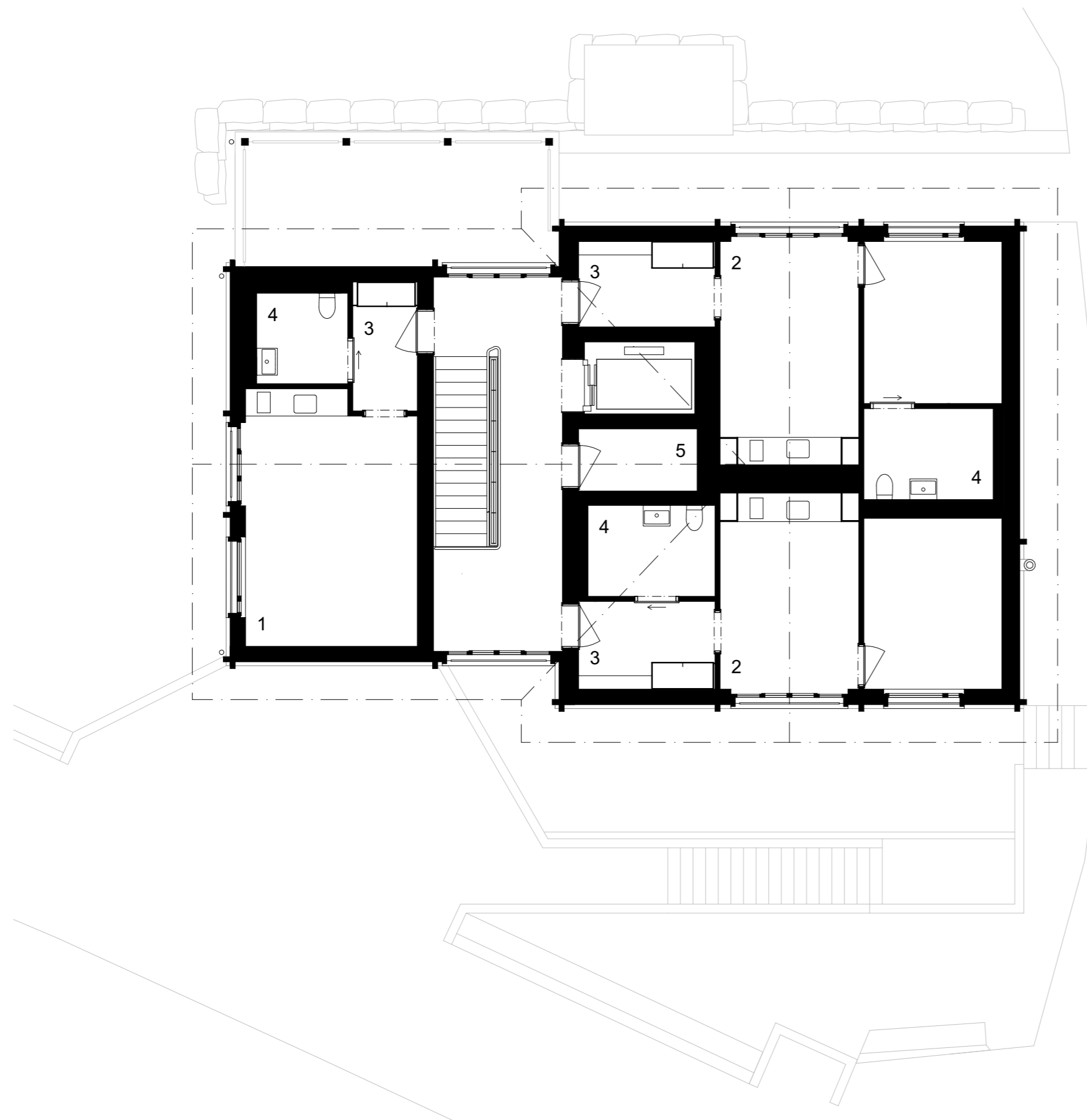
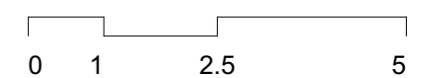


# Ersatzneubau 'Alte Sennerei' - Tenna Hospiz, Mitte 37, 7106 Tenna

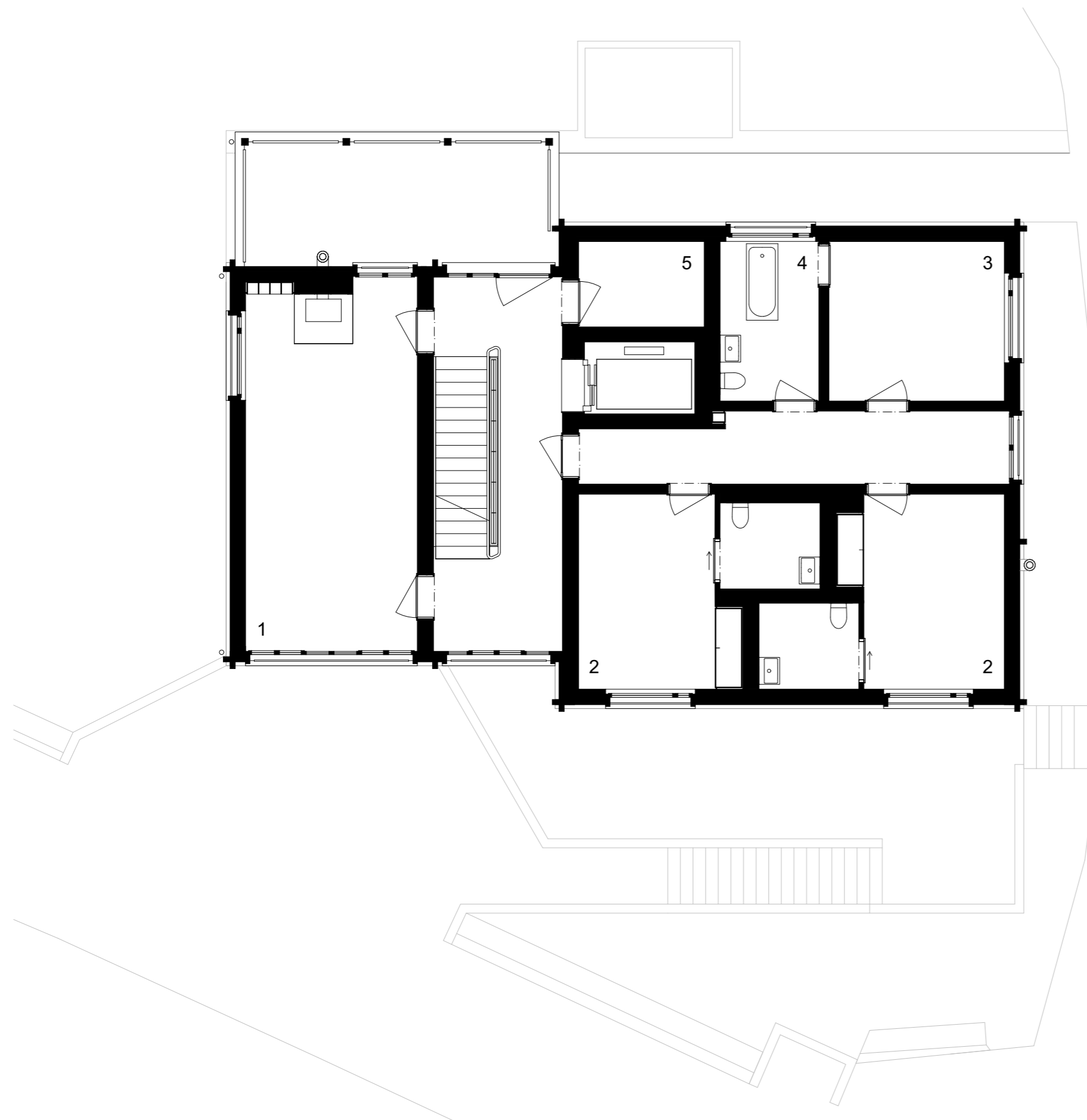


**Dachgeschoss 1:100**

- 1 Einzelzimmer
- 2 Doppelzimmer
- 3 Entrée
- 4 Dusche - Wc
- 5 Lager

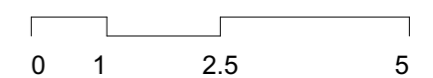


# Ersatzneubau 'Alte Sennerei' - Tenna Hospiz, Mitte 37, 7106 Tenna

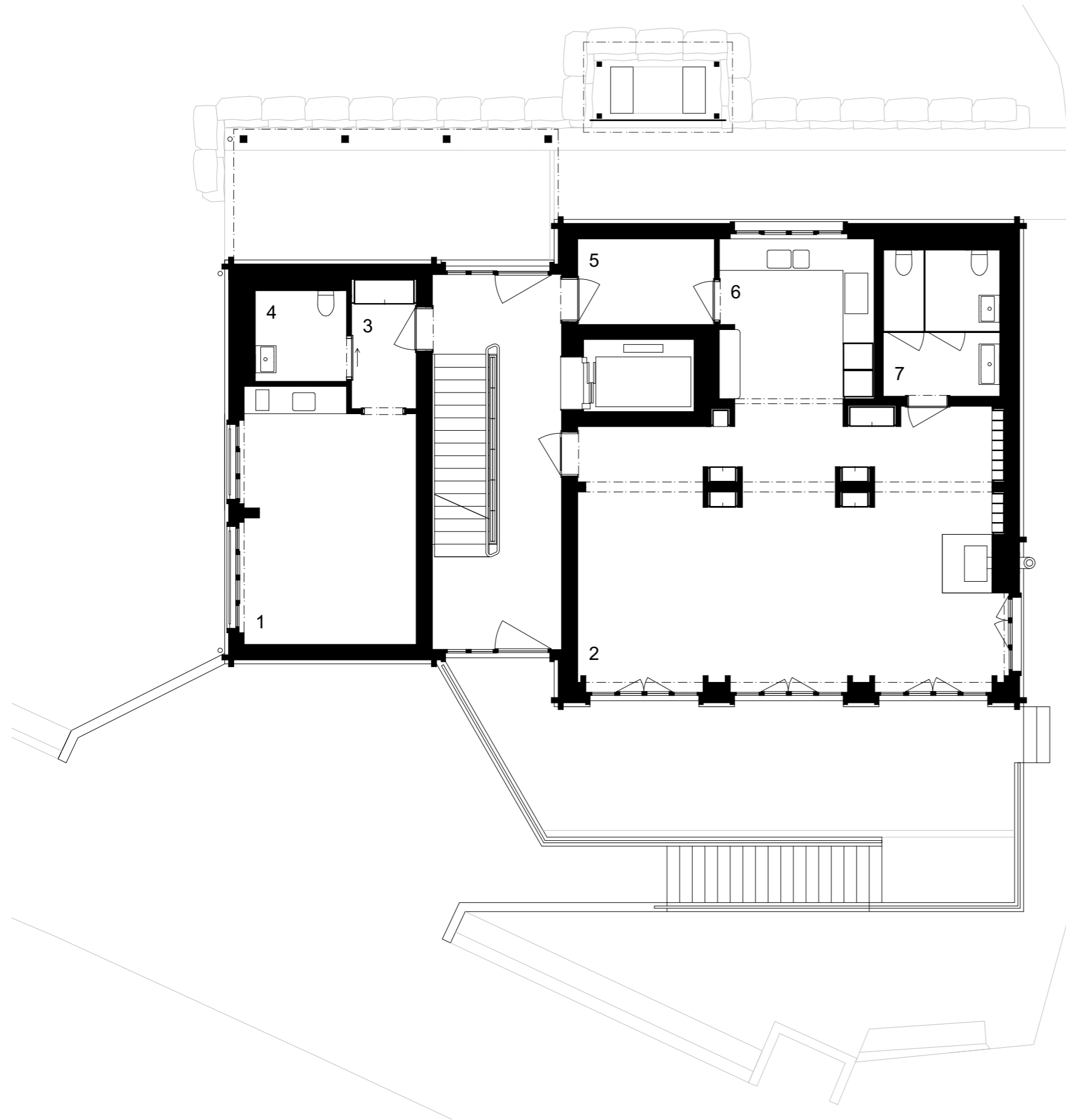


**Obergeschoss 1:100**

- 1 Kleine Stube
- 2 Hospiz-Zimmer
- 3 Familien-Zimmer
- 4 Pflegebad
- 5 Lager

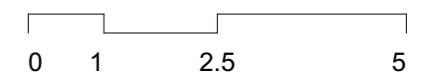


# Ersatzneubau 'Alte Sennerei' - Tenna Hospiz, Mitte 37, 7106 Tenna

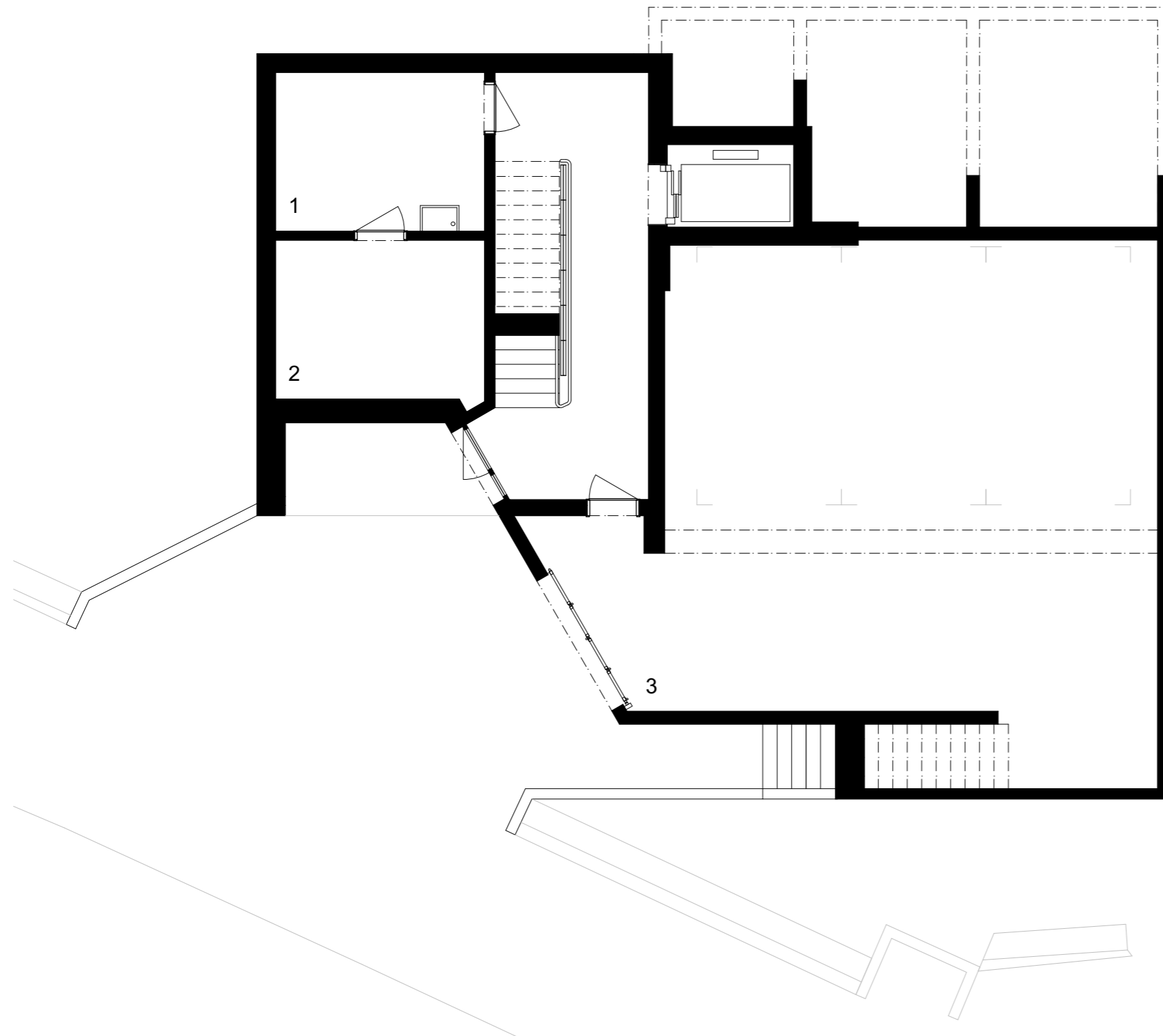


**Erdgeschoss 1:100**

- 1 Einzelzimmer
- 2 Grosse Stube
- 3 Entrée
- 4 Dusche - Wc
- 5 Spensa
- 6 Küche
- 7 Gäste - Wc

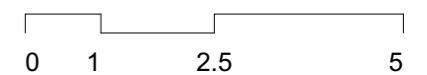


# Ersatzneubau 'Alte Sennerei' - Tenna Hospiz, Mitte 37, 7106 Tenna



**Untergeschoss 1:100**

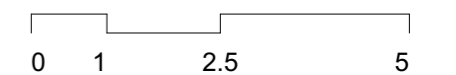
- 1 Waschküche
- 2 Technik
- 3 Garage



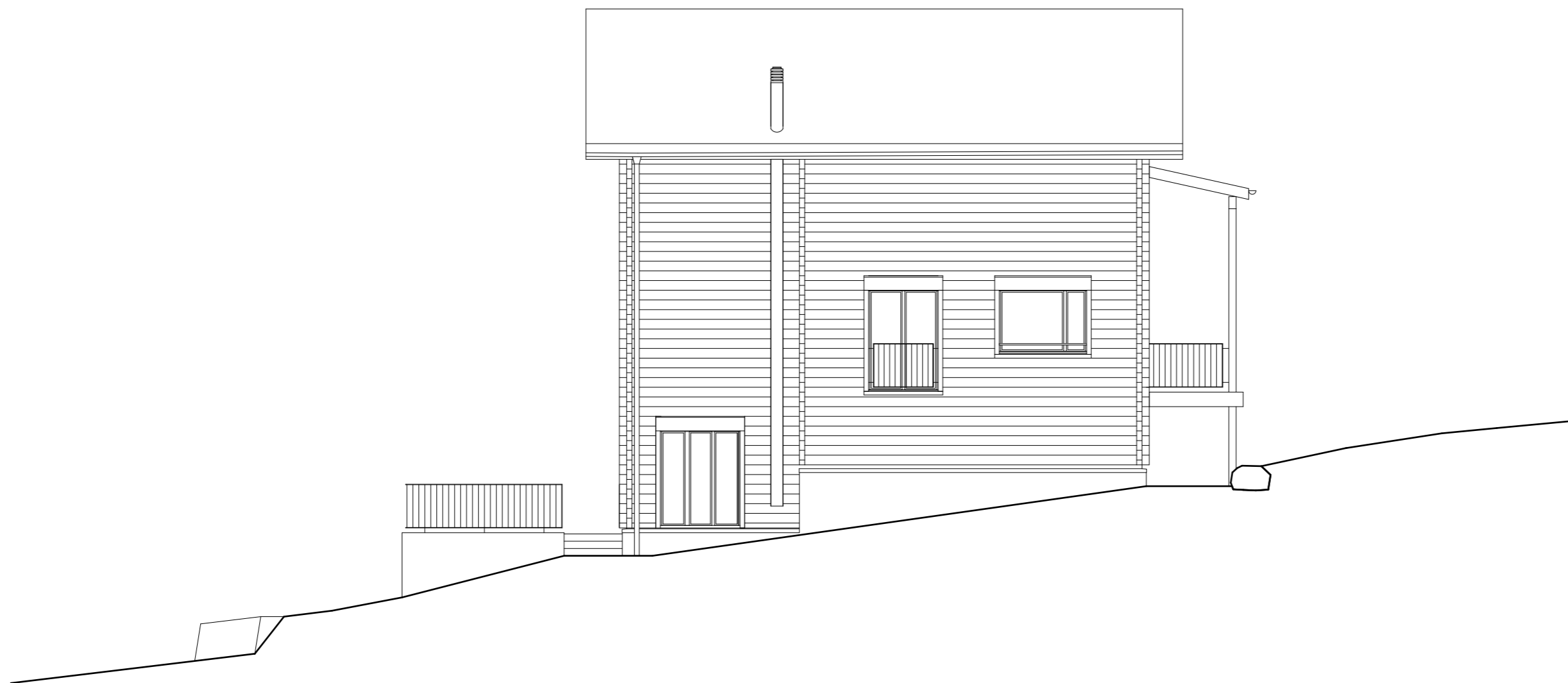
Ersatzneubau 'Alte Sennerei' - Tenna Hospiz, Mitte 37, 7106 Tenna



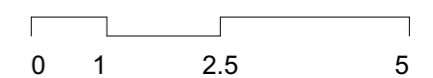
Südost Fassade 1:100



Ersatzneubau 'Alte Sennerei' - Tenna Hospiz, Mitte 37, 7106 Tenna



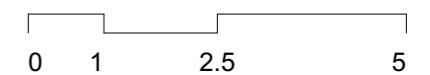
Nordost Fassade 1:100



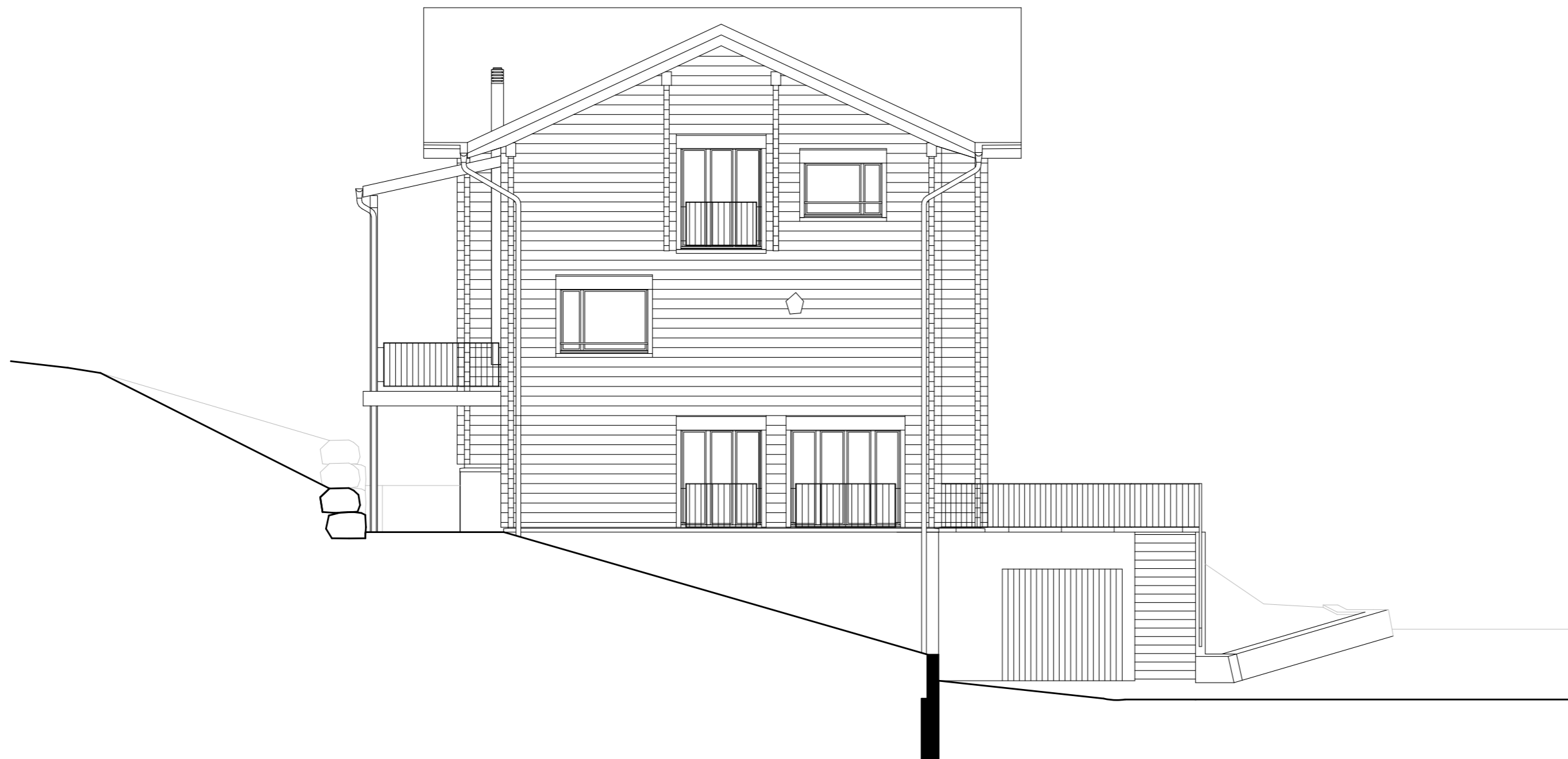
Ersatzneubau 'Alte Sennerei' - Tenna Hospiz, Mitte 37, 7106 Tenna



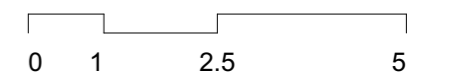
Nordwest Fassade 1:100



Ersatzneubau 'Alte Sennerei' - Tenna Hospiz, Mitte 37, 7106 Tenna

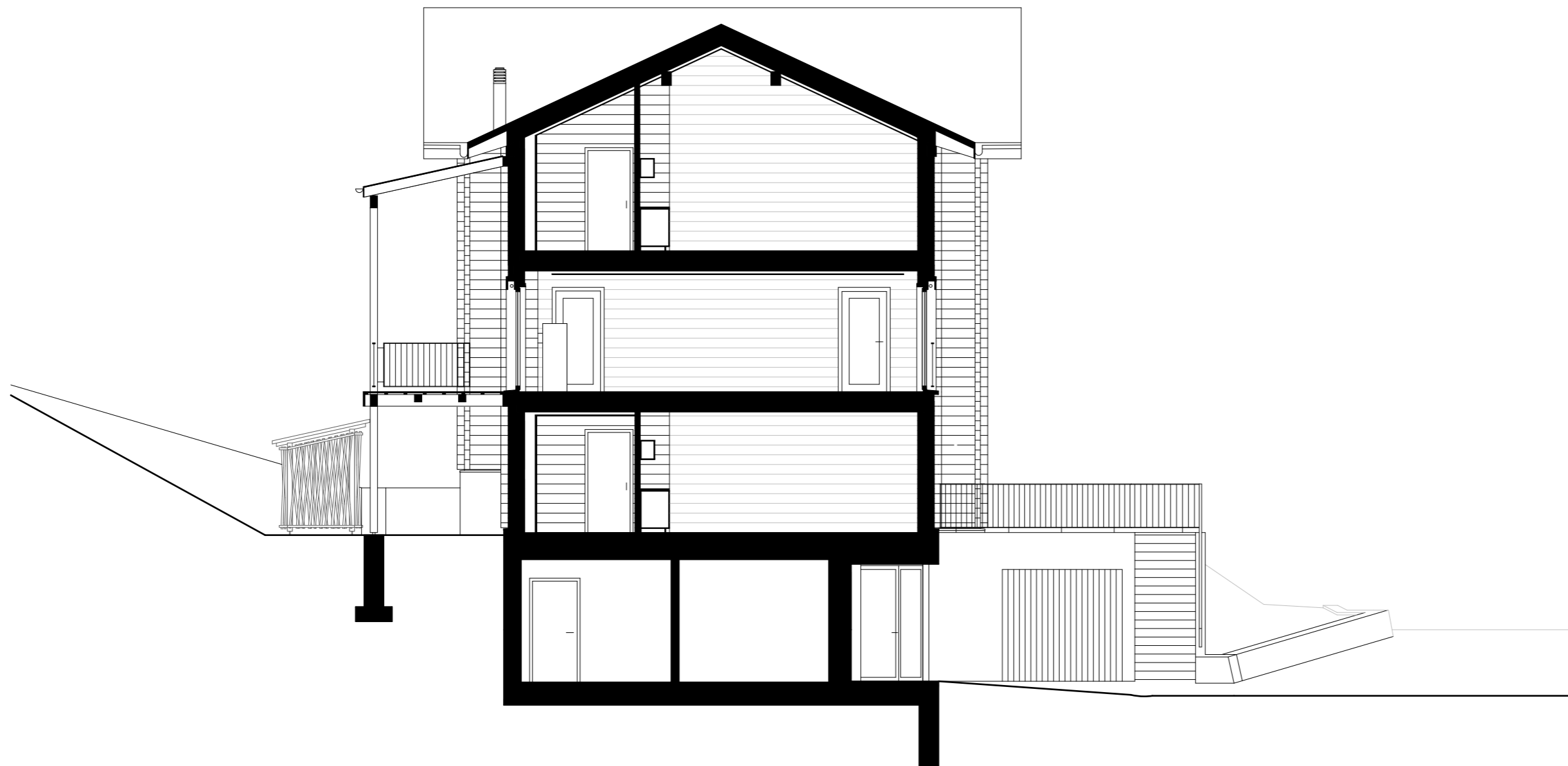


Südwest Fassade 1:100





Ersatzneubau 'Alte Sennerei' - Tenna Hospiz, Mitte 37, 7106 Tenna



Querschnitt 1:100

